

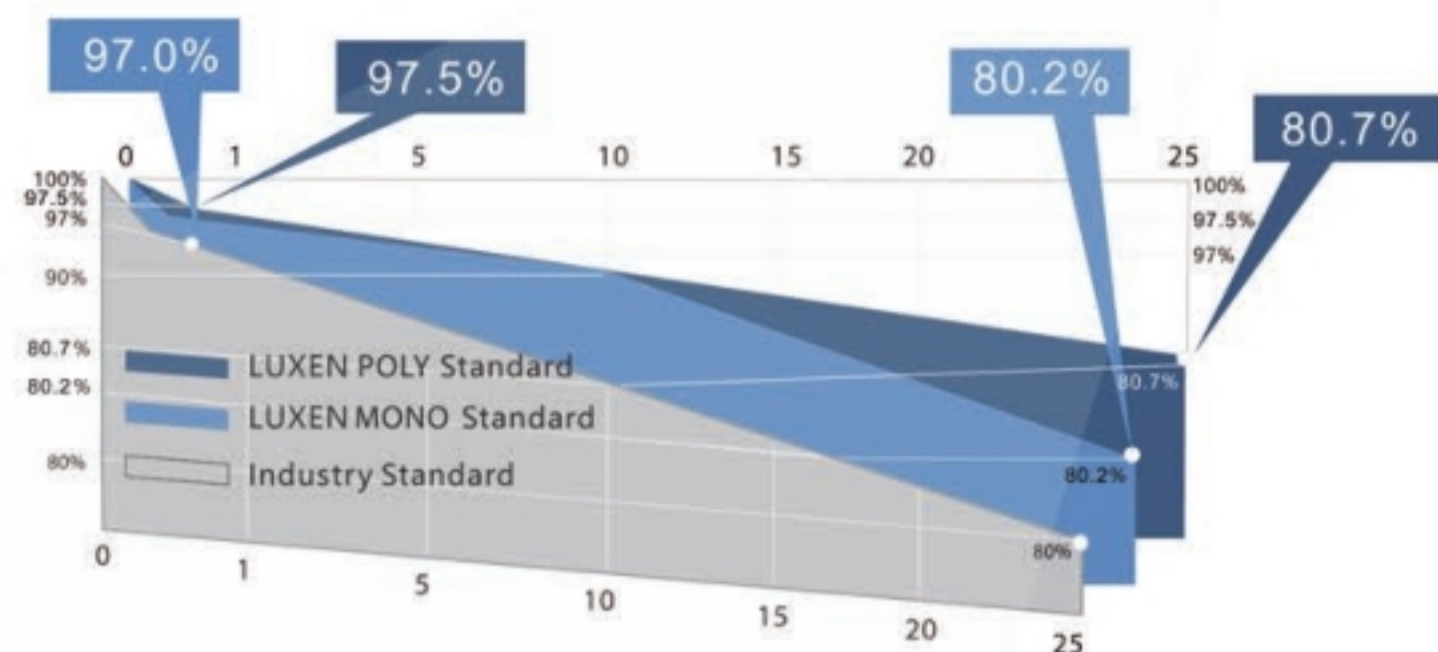
LUXMAX[®]

LUXMAX[®] Plus series superhigh efficiency modules adopt advanced PERC technology (Passivated Emitter Rear Contact technology). Its higher conversion efficiency and better anti-PID performance bring installers the maximize power yield per unit area. They can meet your very strict requirement on quality and efficiency of modules.

60 cells
Bigger PERC Cell



LINEAR PERFORMANCE WARRANTY



ISO9001:2015 management systems



IEC61215 & IEC61730 standard quality



Smaller electric current, less CTM loss
Lower risk of hot spot



Wind load up to 3800Pa
Snow load up to 5400Pa



0-5W positive power sorting



Stable performance under weak light conditions



25-year power warranty
10-year product warranty



MONO

	LNSE-315M		LNSE-320M		LNSE-325M		LNSE-330M		LNSE-335M	
	STC	NOCT	STC	NOCT	STC	NOCT	STC	NOCT	STC	NOCT
Maximum Power (Pmax)	315W	233W	320W	237W	325W	241W	330W	245W	335W	249W
Open Circuit Voltage (Voc)	40.12V	37.72V	40.43V	38.15V	40.74V	38.59V	41.05V	39.01V	41.35V	39.43V
Short Circuit Current (Isc)	10.12A	7.98A	10.19A	8.02A	10.26A	8.06A	10.33A	8.10A	10.40A	8.14A
Voltage at Maximum Power (Vmpp)	32.85V	30.94V	33.13V	31.31V	33.40V	31.67V	33.67V	32.03V	33.94V	32.38V
Current at Maximum Power (Impp)	9.59A	7.53A	9.66A	7.57A	9.73A	7.61A	9.80A	7.65A	9.87A	7.69A
Module Efficiency(%)	18.96%		19.26%		19.56%		19.86%		20.16%	

POLY

	LNSE-275P		LNSE-280P		LNSE-285P		LNSE-290P		LNSE-295P	
	STC	NOCT	STC	NOCT	STC	NOCT	STC	NOCT	STC	NOCT
Maximum Power (Pmax)	275W	204W	280W	208W	285W	212W	290W	216W	295W	220W
Open Circuit Voltage (Voc)	38.27V	36.03V	38.57V	36.32V	38.84V	36.59V	39.14V	36.86V	39.41V	37.13V
Short Circuit Current (Isc)	9.37A	7.41A	9.45A	7.49A	9.54A	7.57A	9.62A	7.65A	9.71A	7.73A
Voltage at Maximum Power (Vmpp)	30.88V	29.39V	31.15V	29.63V	31.39V	29.86V	31.66V	30.08V	31.90V	30.30V
Current at Maximum Power (Impp)	8.91A	6.94A	8.99A	7.02A	9.08A	7.10A	9.16A	7.18A	9.25A	7.26A
Module Efficiency(%)	16.55%		16.85%		17.16%		17.46%		17.76%	

Packing Configuration

	20'GP	40'GP
Container	20'GP	40'GP
Pieces per pallet	30	30
Pallets per container	12	28
Pieces per container	360	840

Mechanical Characteristics

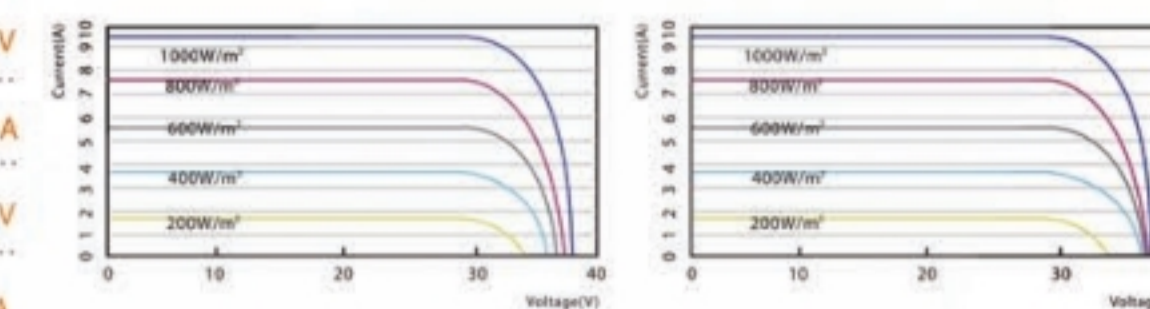
Solar Cell	Mono/Poly
No. of Cells	60(6x10)
Dimensions	1658x1002x35mm
Weight	19.5 kgs
Front	Glass 3.2mm tempered glass
Frame	Anodized aluminium alloy
Junction Box	IP68 rated(3 by pass diodes)
Output Cables	4.0mm ² , symmetrical length (-)900mm and (+)900mm
Connectors	MC4 compatible
Mechanical load test	5400Pa

60 cells



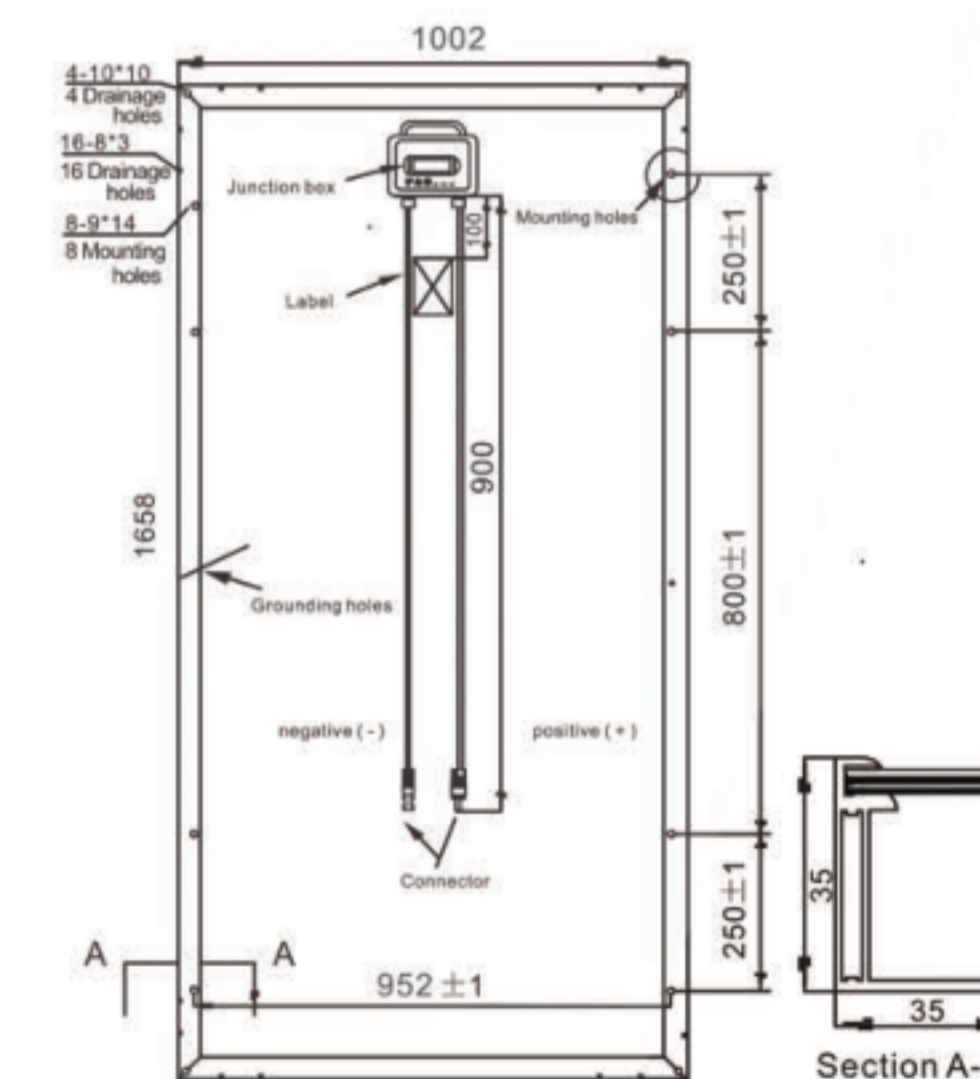
LNSE-330M/I-V

LNSE-290P/I-V



STC: Irradiance 1000W/m², cell temperature 25°C, AM1.5G
NOCT: Irradiance 800W/m², ambient temperature 20°C, wind speed 1m/s, AM1.5G

Operating Module Temperature	-40°C to +85°C
Maximum System Voltage	1500V DC(IEC) 1000V DC(UL)
Maximum Series Fuse Rating	20A (MONO) 15A (POLY)
Power Tolerance	0/+5W
Temperature Characteristics	
Nominal Operating Cell Temperature (Noct)	45±2°C
Temperature Coefficient of Pmax	-0.36%/°C
Temperature Coefficient of Voc	-0.29%/°C
Temperature Coefficient of Isc	0.05%/°C



Note: Due to continuous technical innovation, R&D and improvement, technical data above mentioned may be of modification accordingly. SUNLIKESOLAR have the sole right to make such modification at anytime without further notice.